

**THY1 Antibody (N-term)**  
**Purified Rabbit Polyclonal Antibody (Pab)**  
**Catalog # AP2050a****Specification**

---

**THY1 Antibody (N-term) - Product Information**

Application	IHC-P, WB,E
Primary Accession	<a href="#">P04216</a>
Reactivity	Human
Host	Rabbit
Clonality	Polyclonal
Isotype	Rabbit IgG
Antigen Region	36-65

**THY1 Antibody (N-term) - Additional Information****Gene ID** 7070**Other Names**

Thy-1 membrane glycoprotein, CDw90, Thy-1 antigen, CD90, THY1

**Target/Specificity**

This THY1 antibody is generated from rabbits immunized with a KLH conjugated synthetic peptide between 36-65 amino acids from the N-terminal region of human THY1.

**Dilution**

IHC-P~~1:50~100

WB~~1:1000

E~~Use at an assay dependent concentration.

**Format**

Purified polyclonal antibody supplied in PBS with 0.09% (W/V) sodium azide. This antibody is prepared by Saturated Ammonium Sulfate (SAS) precipitation followed by dialysis against PBS.

**Storage**

Maintain refrigerated at 2-8°C for up to 2 weeks. For long term storage store at -20°C in small aliquots to prevent freeze-thaw cycles.

**Precautions**

THY1 Antibody (N-term) is for research use only and not for use in diagnostic or therapeutic procedures.

**THY1 Antibody (N-term) - Protein Information****Name** THY1

**Function** May play a role in cell-cell or cell-ligand interactions during synaptogenesis and other events in the brain.

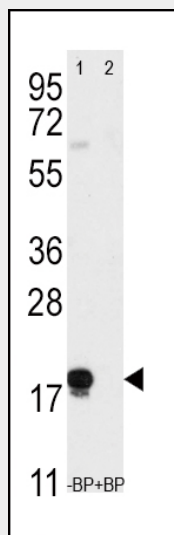
**Cellular Location**

Cell membrane; Lipid-anchor, GPI- anchor

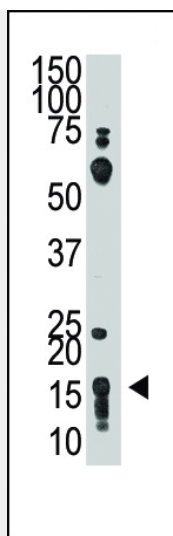
**THY1 Antibody (N-term) - Protocols**

Provided below are standard protocols that you may find useful for product applications.

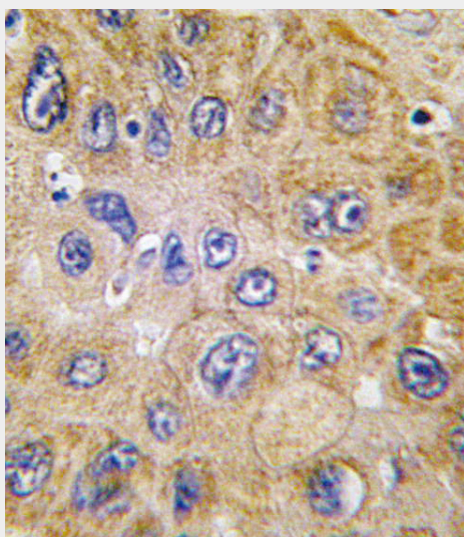
- [Western Blot](#)
- [Blocking Peptides](#)
- [Dot Blot](#)
- [Immunohistochemistry](#)
- [Immunofluorescence](#)
- [Immunoprecipitation](#)
- [Flow Cytometry](#)
- [Cell Culture](#)

**THY1 Antibody (N-term) - Images**

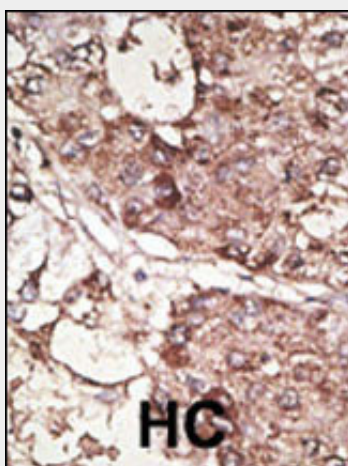
Western blot analysis of anti-THY1 (N-term) Pab (Cat.#AP2050a) pre-incubated without (lane 1) and with (lane 2) blocking peptide (BP2050a) in T47D cell line lysate. THY1 (N-term) (arrow) was detected using the purified Pab .



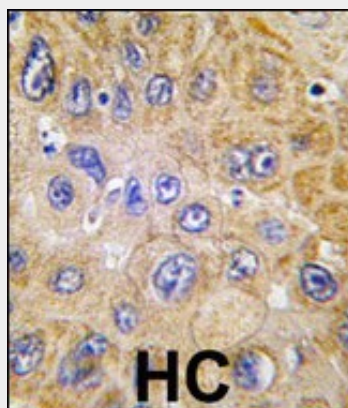
The anti-THY1 (N-term) Pab (Cat. #AP2050a) is used in Western blot to detect THY1 in HL60 cell lysate.



Formalin-fixed and paraffin-embedded human hepatocarcinoma tissue reacted with THY1 antibody (N-term) (Cat.#AP2050a), which was peroxidase-conjugated to the secondary antibody, followed by DAB staining. This data demonstrates the use of this antibody for immunohistochemistry; clinical relevance has not been evaluated.



Formalin-fixed and paraffin-embedded human cancer tissue reacted with the primary antibody, which was peroxidase-conjugated to the secondary antibody, followed by DAB staining. This data demonstrates the use of this antibody for immunohistochemistry; clinical relevance has not been evaluated. BC = breast carcinoma; HC = hepatocarcinoma.



Formalin-fixed and paraffin-embedded human hepatocarcinoma tissue reacted with THY1 antibody (N-term) (Cat.#AP2050a), which was peroxidase-conjugated to the secondary antibody, followed by DAB staining. This data demonstrates the use of this antibody for immunohistochemistry; clinical relevance has not been evaluated.

#### **THY1 Antibody (N-term) - Background**

THY1 (CD90) antigen is a GPI linked glycoprotein member of the Immunoglobulin superfamily. It is expressed on murine T cells, thymocytes, neural cells, cells of granulocytic lineage, early hematopoietic progenitors, fibroblasts, neurons and Kupffer's cells. Thy1 may play a role in cell to cell or cell to ligand interactions during synaptogenesis and other events in the brain.

#### **THY1 Antibody (N-term) - References**

Koumas, L., et al., Am. J. Pathol. 163(4):1291-1300 (2003). Abeysinghe, H.R., et al., Cancer Genet. Cytogenet. 143(2):125-132 (2003). Saalbach, A., et al., Microvasc. Res. 64(1):86-93 (2002). Henniker, A.J., J. Biol. Regul. Homeost. Agents 15(4):392-393 (2001). Ye, Z., et al., Biochem. Biophys. Res. Commun. 275(1):223-227 (2000).

#### **THY1 Antibody (N-term) - Citations**

- [The clinical pathological significance of Thy1 and CD49f expression in chondrosarcomas.](#)
- [Quantitative Analysis of Differential Proteome Expression in Bladder Cancer vs. Normal Bladder Cells Using SILAC Method.](#)
- [Analogy between sphere forming ability and stemness of human hepatoma cells.](#)
- [High expression levels of putative hepatic stem/progenitor cell biomarkers related to tumour angiogenesis and poor prognosis of hepatocellular carcinoma.](#)